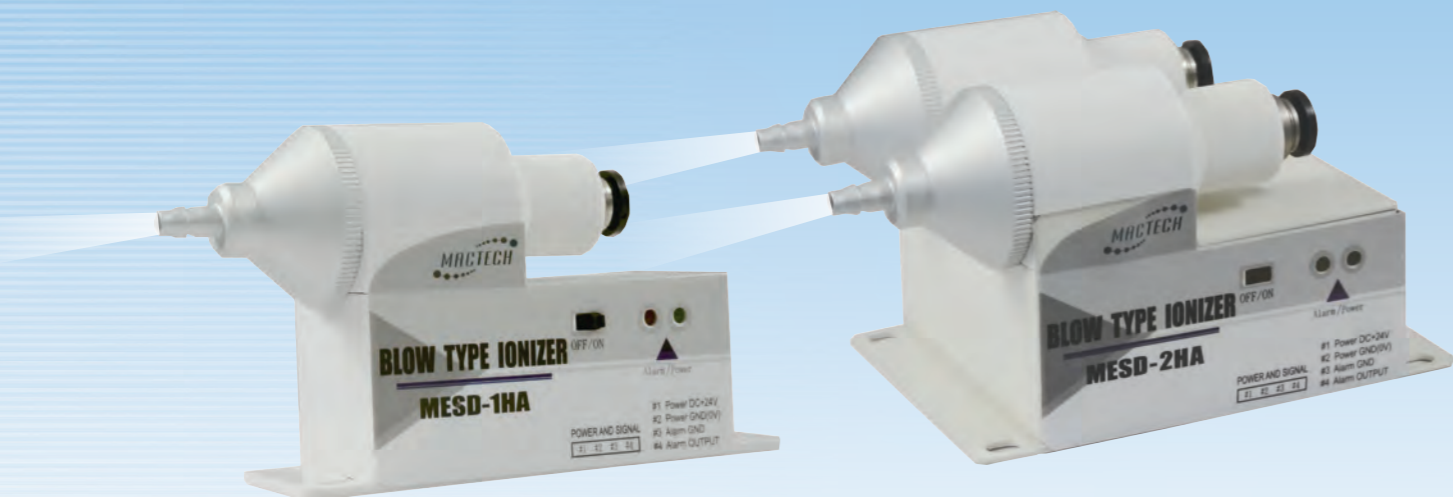


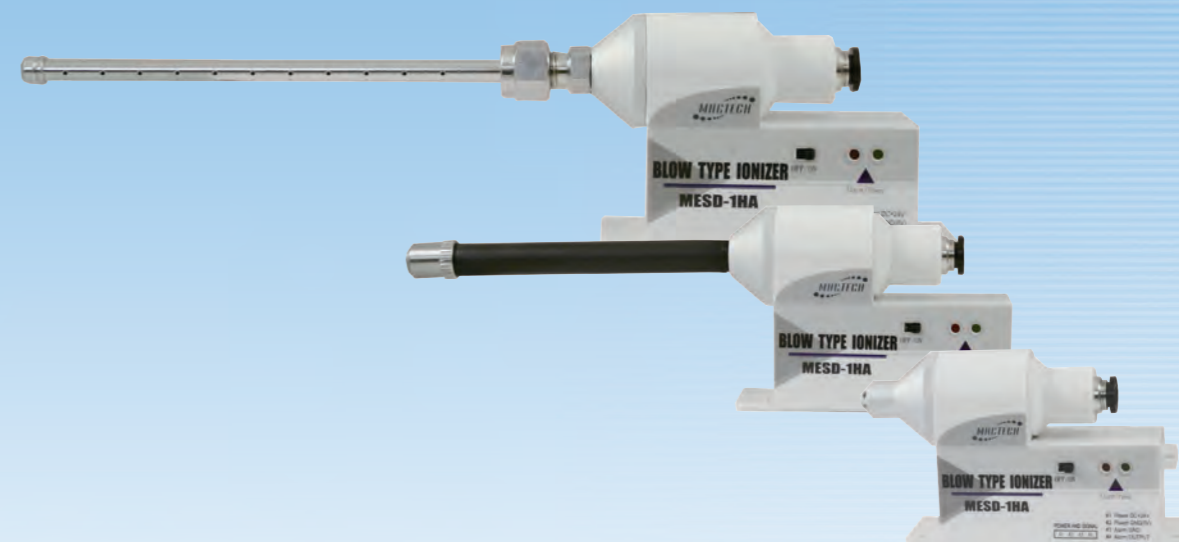
- 棒型
Bar Type
- 區域型
Area Type
- 扇型
Fan Type
- 管型
Tube Type
- 槍型
Gun Type
- 量測儀
Meter

- 棒型
Bar Type
- 區域型
Area Type
- 扇型
Fan Type
- 管型
Tube Type
- 槍型
Gun Type
- 量測儀
Meter



▶ MESD-1HA

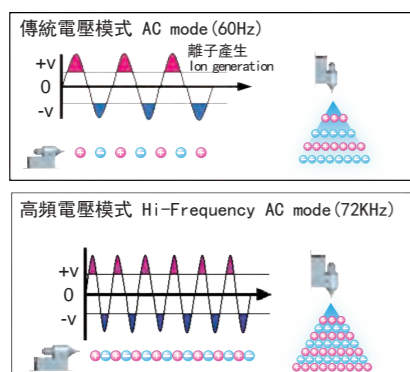
▶ MESD-2HA



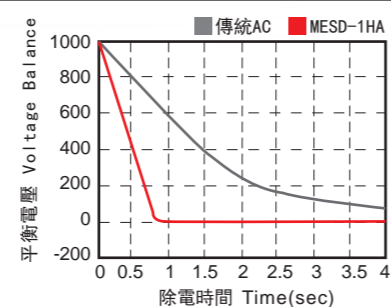
提供多樣噴嘴頭以適用於不同產業
Provide different nozzles • Using in various industry

高頻電壓AC模式 High Frequency AC Mode

放電針正負快速交替，可以有效的產生大量正負離子，加快消除靜電能力。
Electrode probe rapidly interflow, can effectively produce large of positive and negative ions, accelerate the elimination of capacity.



除電比較圖 Static Elimination Performance

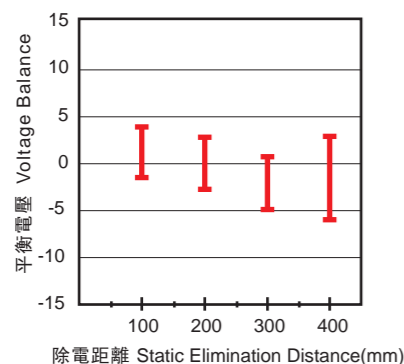


測試條件 距離 30cm Test Conditions Distance 30cm
±1000V到±100V消除靜電所需時間 Elimination time : From ±1000V to ±100V
使用150mm x 150mm CPM (20pF) Use 150mm x 150mm (20pF) CPM device

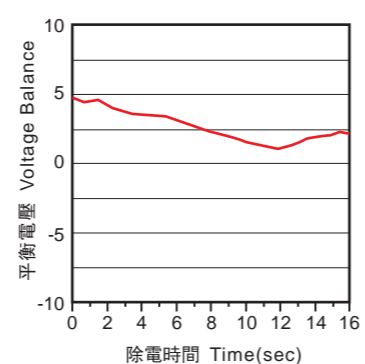
高精度低平衡電壓 High Precision Voltage Balance

利用高頻電壓模式，可有效提高離子平衡度到±15V。
Using high voltage mode, can boost ions balance up to ±15V.

距離與離子平衡關係圖 Distance and Ion Balance Diagram



離子平衡電壓圖 Ion Balance and Voltage Diagram



產品特色 Features

檢視系統 Inspection System

內建LED顯示，綠燈亮起時表示電源入力正常，紅燈亮時表示異常輸出，以提供快速檢視系統狀態。

When green light turns on, it means output normal. When red light turns on, it means output alarm. To provide inspecting status of system rapidly.



低電壓DC24V輸入 Input of DC24V Low Voltage

可有效避免放電所造成纜線老化與對週遭的裝置影響，建構高可靠性系統。
Which can prevent cables gradually aging by the static discharge with high reliable system.

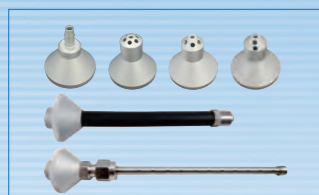
內建高壓電源系統 Mounted High Voltage System

無需使用專用高壓配線，無高壓配線困擾，並且可有效節省安裝空間，由於外觀尺寸很小，方便裝置於狹小空間，輕鬆應付各種系統安裝之需求。

Without using a high-voltage cable, moreover can effectively save installation space. Due to the appearance of small size, convenient for small space, easy to cope with the demand of various system installation.

- 棒型
Bar Type
- 區域型
Area Type
- 扇型
Fan Type
- 管型
Tube Type
- 槍型
Gun Type
- 量測儀
Meter

功能解析 Functions Explanation



多樣式噴嘴，適用多種場合
Different nozzles, using in various industry



快拆放電針組，保養容易
Quick-release electrode probe, easy to maintain



高精度離子平衡可達 $\pm 15V$
High Precision Ion Balance up to $\pm 15V$

體積小，適合空間狹小場合
Small device, easy to installation

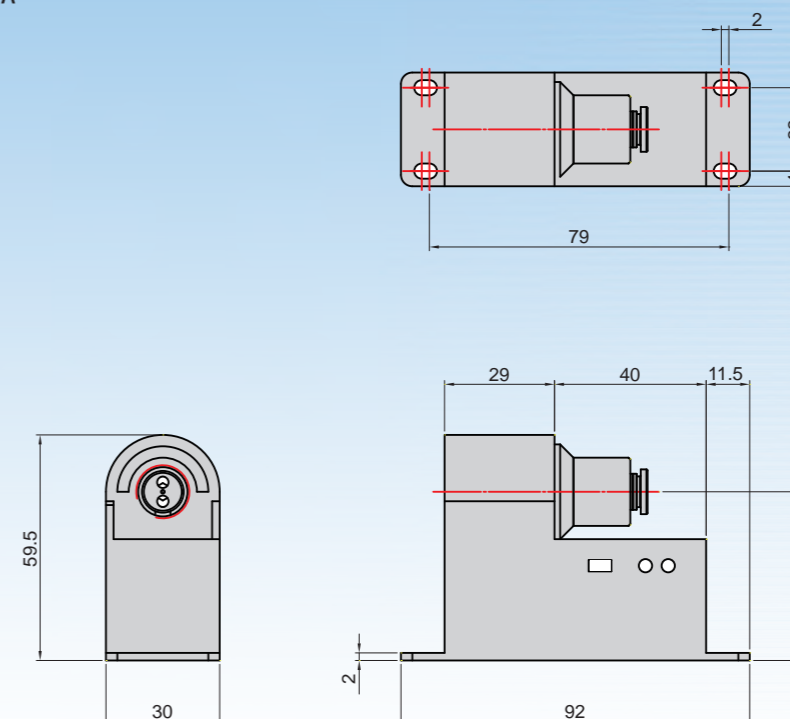


簡易顯示，快速判別狀態
Clear display status, easy to determine

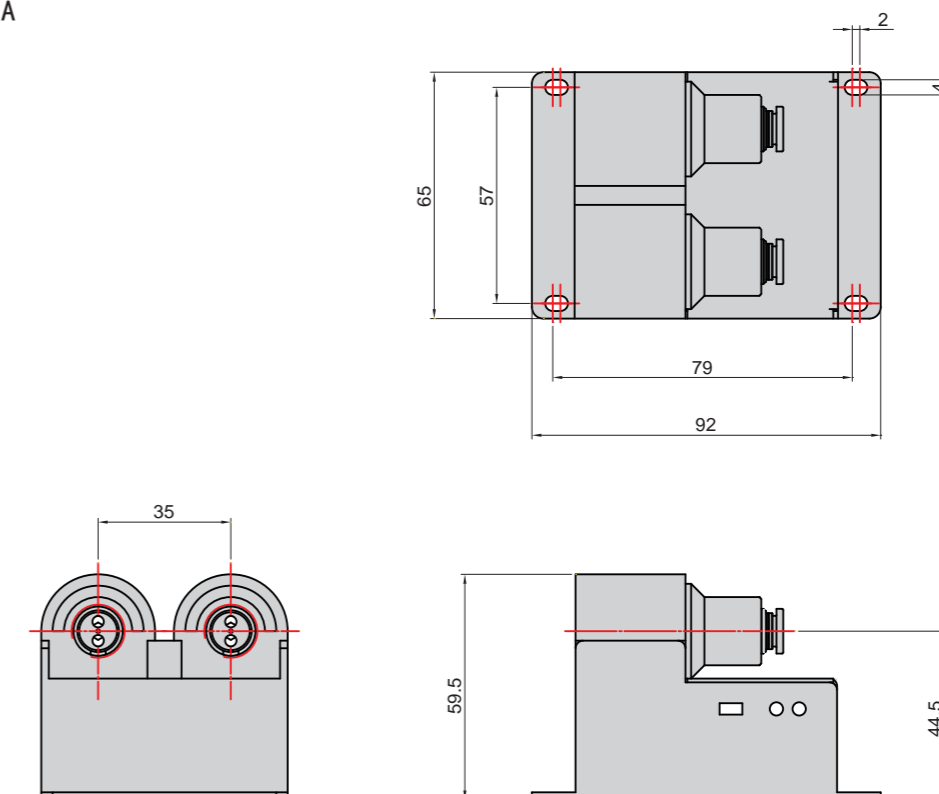
外觀尺寸 External Dimensions

單位 Unit: mm

► MESD-1HA



► MESD-2HA



規格 Specifications

產品型號 Model	MESD-1HA	MESD-2HA
使用流體 Air Flow	乾燥壓縮空氣 Compressed Dry Air	
輸入電源 Input Power	DC24V $\pm 5\%$	
消耗電流 Current Consumption	Approximate 100mA	Approximate 200mA
出力電源 Applied Voltage	$\pm 2.2KV$ 72 KHz (MAX)	
離子平衡 Ion Balance	$\pm 15V$ (距離 Distance 300mm)	
建議設置距離 Operating Distance	50mm~500mm	
動作指示燈 LED Indicator	電源 Power Status	電源輸入時綠燈亮 When power input LED turn on green light
	異常 Alarm Show	異常時紅燈亮 When abnormal LED turn on red light
異常輸出接點 Power Safety Circuit	NPN電晶體輸出 NPN Transistor output (Max. 24mA)	
臭氧量 Ozone Amount	0.03ppm以下 Under 0.03ppm	
最大空氣流量 Max CDA Consumption	Approximate 60 ℓ /min	Approximate 120 ℓ /min
使用壓力範圍 Air Pressure Range	0.01~0.5MPa	
使用環境溫度 Ambient Temperature	15~40°C (室內 Indoor)	
使用環境溼度 Ambient Humidity	35~65%HR (無冷凝 No condensation)	

- 棒型
Bar Type
- 區域型
Area Type
- 扇型
Fan Type
- 管型
Tube Type
- 槍型
Gun Type
- 量測儀
Meter

配件 Accessories

管型標準配件
Tube Type Package Content

- ▶ 管型電纜線 Power Cable (2 meter)
MESD-CP024



噴嘴選購配件
Nozzle Accessory Options

- ▶ 可撓管型噴嘴組 Flexible Tube Nozzle
MESD-F100L~F500L



- ▶ 標準型噴嘴組 Standard Nozzle
MESD-NSTA



- ▶ 120° 擴散型噴嘴組 Spread Nozzle
MESD-N120A



耗材選購配件
Consumable Options

- ▶ 管型放電針組 Electrode Probe
MESD-HA303



(使用壽命: 約6,000小時)
(Life time: about 6,000 hrs)

- ▶ 棒型不鏽鋼管噴嘴組 Stainless Steel Pipe Nozzle
MESD-S100L~S500L



- ▶ 90° 擴散型噴嘴組 Spread Nozzle
MESD-N90CA



- ▶ 90° 平式擴散型噴嘴組 Horizontal Spread Nozzle
MESD-N90L



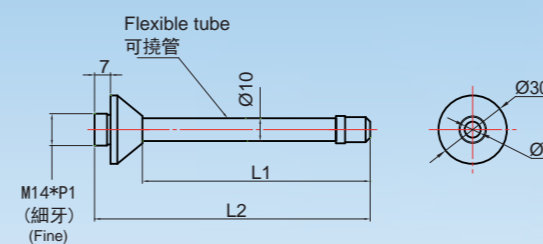
電源選購配件
Power Supply Options

- ▶ 管型電源供應器 Power Supply 24W
MESD-CP025C



單位 Unit: mm

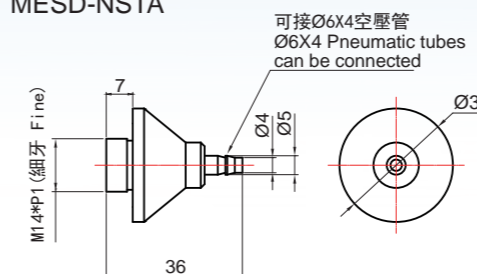
- ▶ 可撓管型噴嘴組 Flexible Tube Nozzle
MESD-F100L~F500L



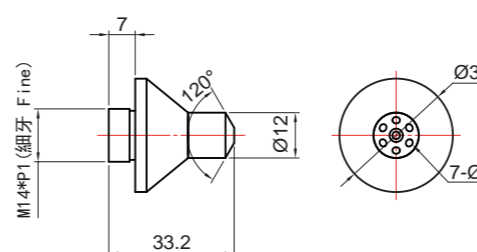
型號 Model	L1	L2
MESD-F100L	100	121
MESD-F200L	200	221
MESD-F300L	300	321
MESD-F400L	400	421
MESD-F500L	500	521

* 超過300L為訂單生產, 建議選購BC系列
The length of tube over 300mm is make-to-order;
we recommend choosing BC series.

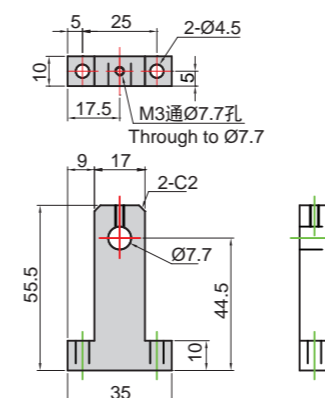
- ▶ 標準型噴嘴組 Standard Nozzle
MESD-NSTA



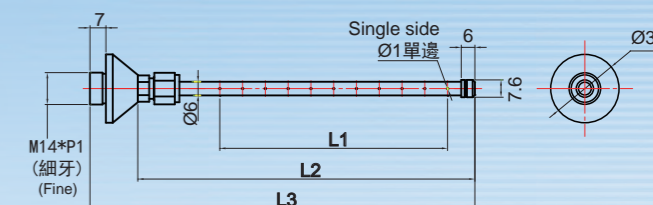
- ▶ 120° 擴散型噴嘴組 Spread Nozzle
MESD-N120A



- ▶ 鋼管噴嘴固定架 Stainless Steel Pipe Fixture
MESD-BA01



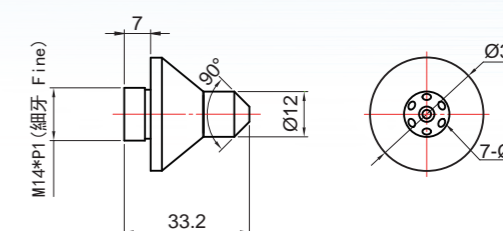
- ▶ 棒型不鏽鋼管噴嘴組 Stainless Steel Pipe Nozzle
MESD-S100L~S700L



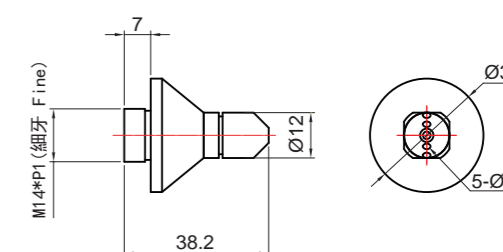
型號 Model	孔數 No. of hole	L1	L2	L3
MESD-S100L	10	100	148	169
MESD-S200L	20	200	248	269
MESD-S300L	30	300	348	369
MESD-S400L	40	400	448	469
MESD-S500L	50	500	548	569
MESD-S600L	60	600	648	669
MESD-S700L	70	700	748	769

* 超過300L為訂單生產, 建議選購BC系列
The length of tube over 300mm is make-to-order;
we recommend choosing BC series.

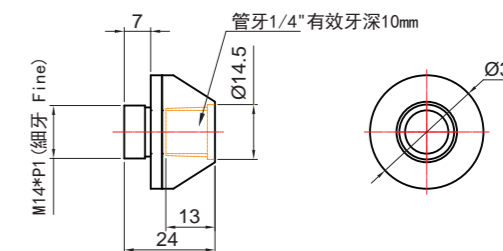
- ▶ 90° 擴散型噴嘴組 Spread Nozzle
MESD-N90CA



- ▶ 90° 平式擴散型噴嘴組 Horizontal Spread Nozzle
MESD-N90L



- ▶ 萬向軟管噴嘴 Adjustable Hoses Nozzle
MESD-NSH



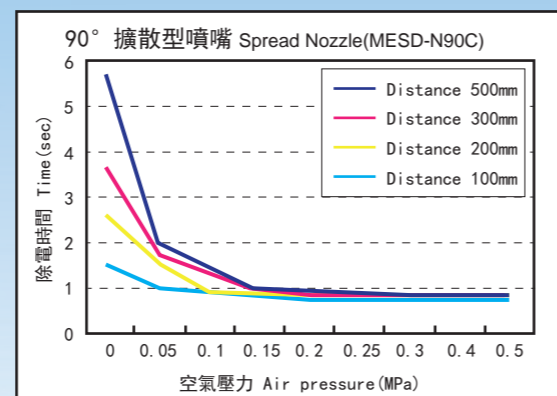
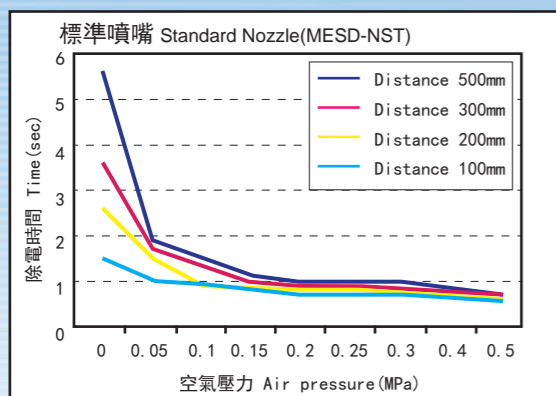
窄域定點型靜電消除器 Narrow Range Ionizer

- 棒型
Bar Type
- 區域型
Area Type
- 扇型
Fan Type
- 管型
Tube Type
- 槍型
Gun Type
- 量測儀
Meter

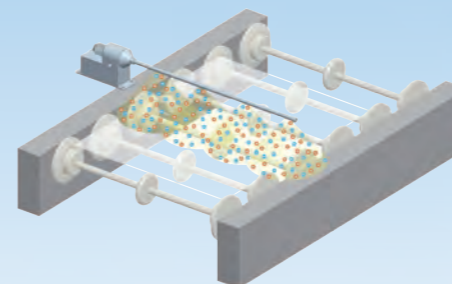
性能曲線圖 *Static Elimination Performance*

應用實例 *Applications*

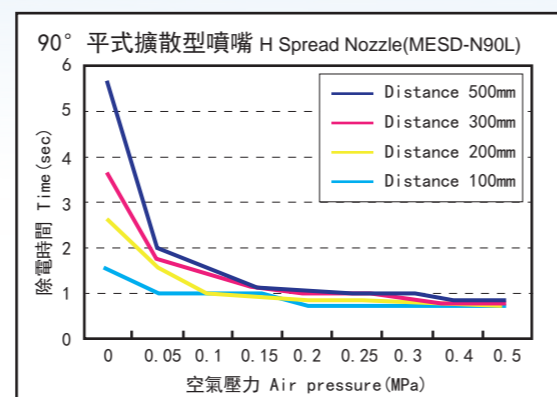
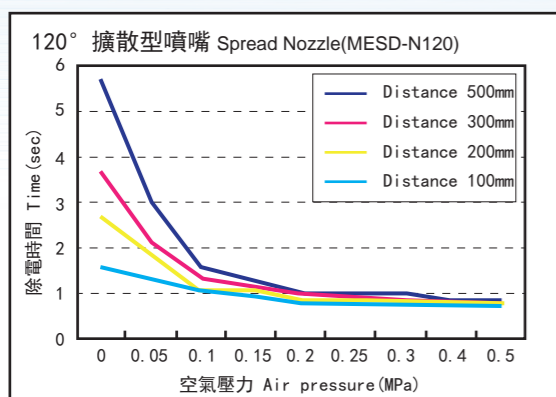
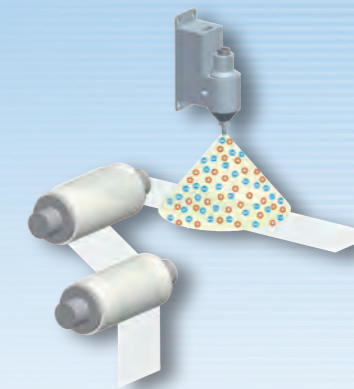
- 棒型
Bar Type
- 區域型
Area Type
- 扇型
Fan Type
- 管型
Tube Type
- 槍型
Gun Type
- 量測儀
Meter



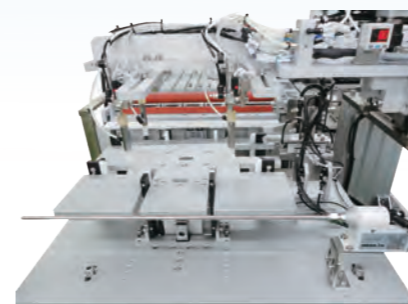
► 應用於滾輪輸送機構
Conveyor Production Processes



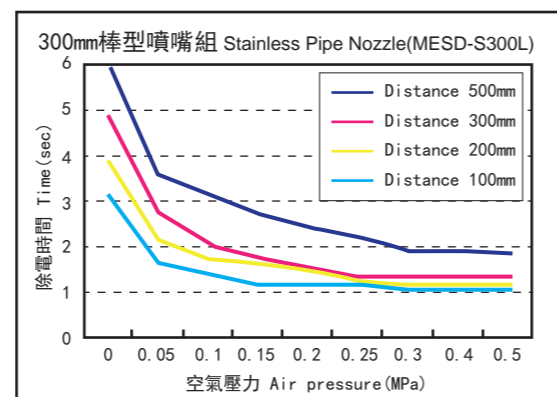
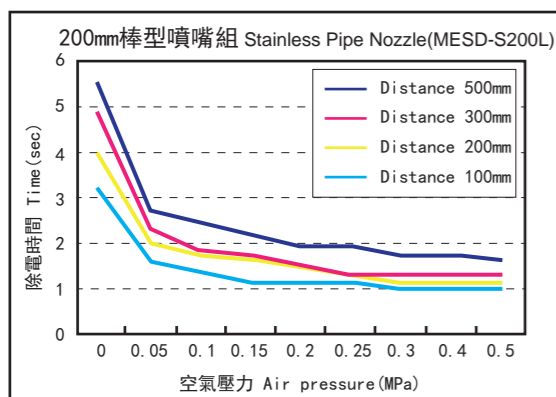
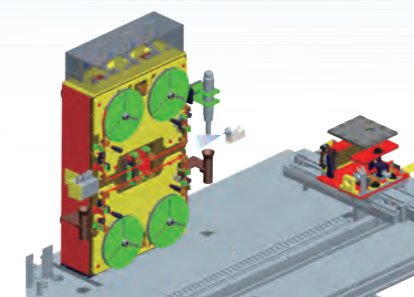
► 滾輪摩擦靜電消除
Rewinding Machines



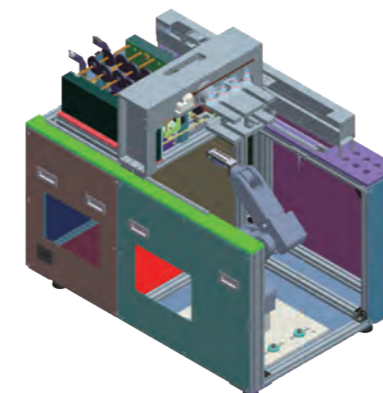
► 撕/貼膜機靜電消除
Peeling Films & Lamination



► 捲料機構靜電消除
Operation Machines



► 機械手臂搬運靜電消除
Robot Transferred



► 應用於玻璃切割時的靜電消除
Glass Cutting Machines

